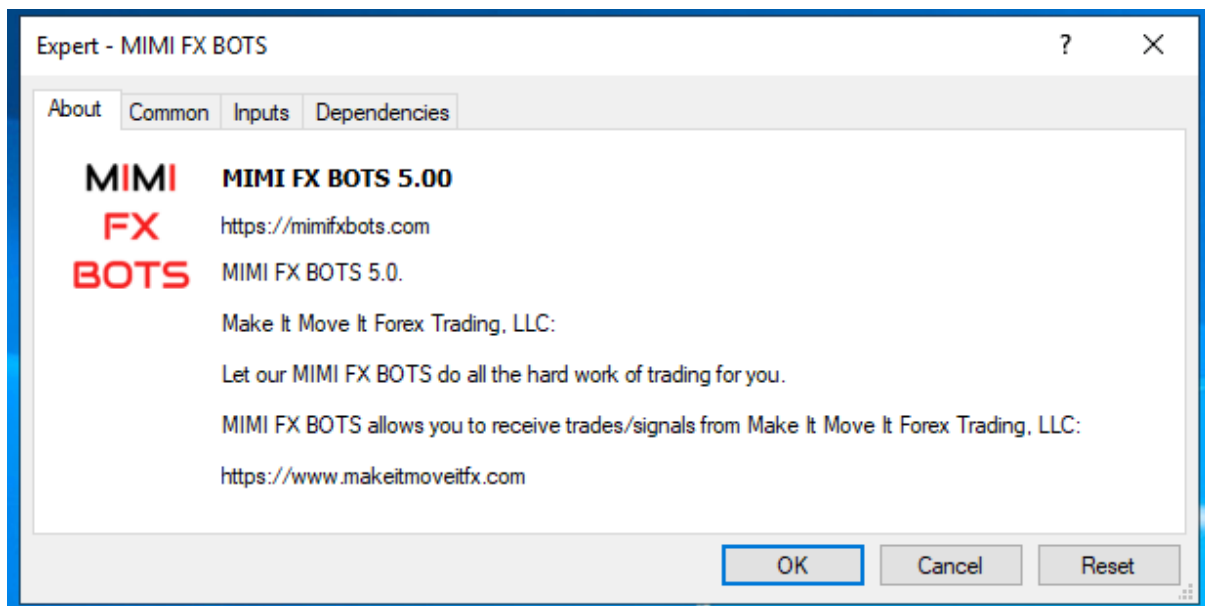


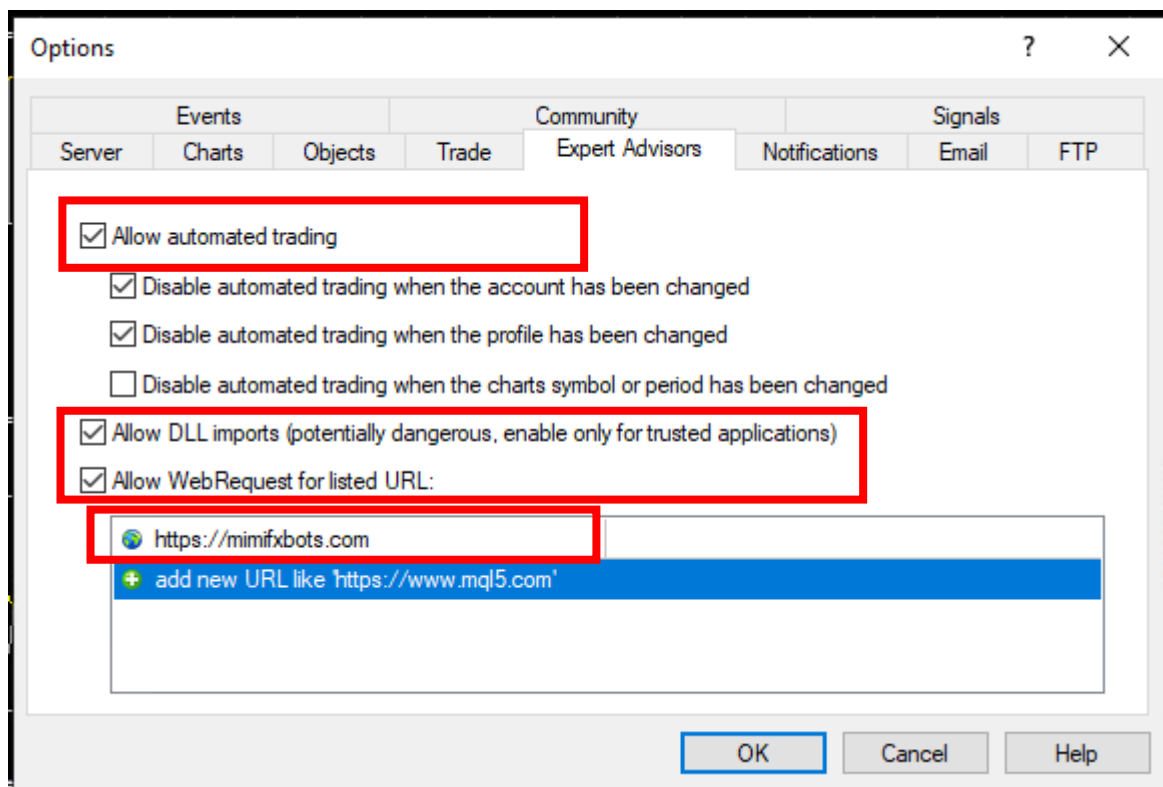


Trade Receiver Free - Manual Guide

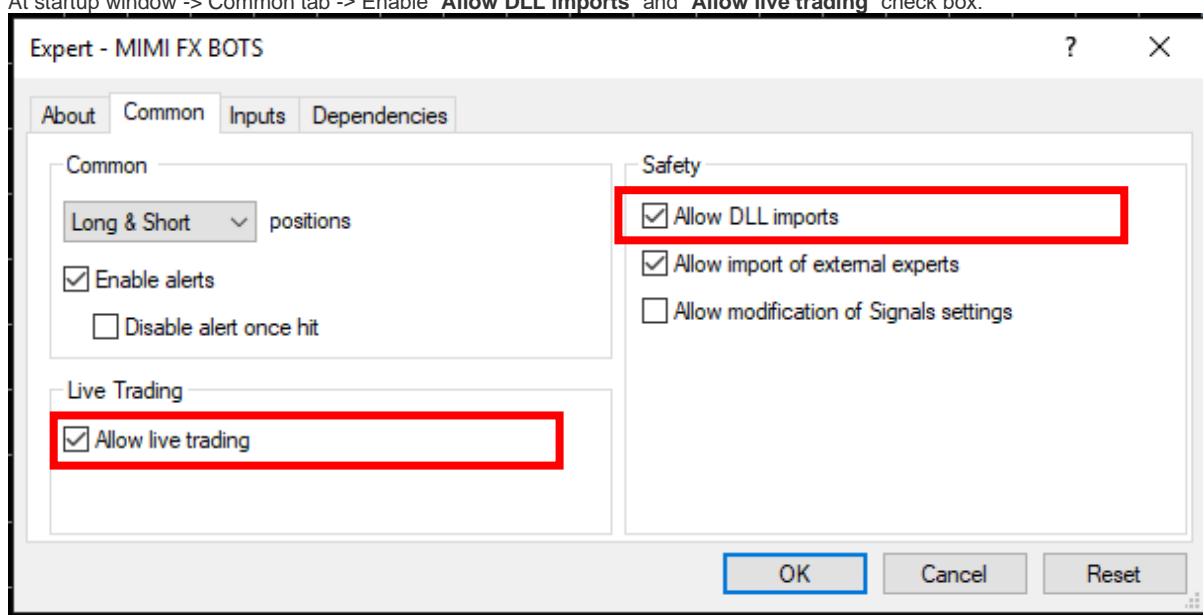


1. Installation:

- Unzip the product's package, you will see the "MIMI FX BOTS.ex4" and "MIMI FX BOTS.ex5" files.
- Open your receiver MT4/MT5 platform -> Main menu -> Tools -> Options -> Expert Advisors -> Enable "Allow automated trading", "Allow DLL imports", "Allow WebRequest for listed URL", and add URL "https://mimifxbos.com" as following:

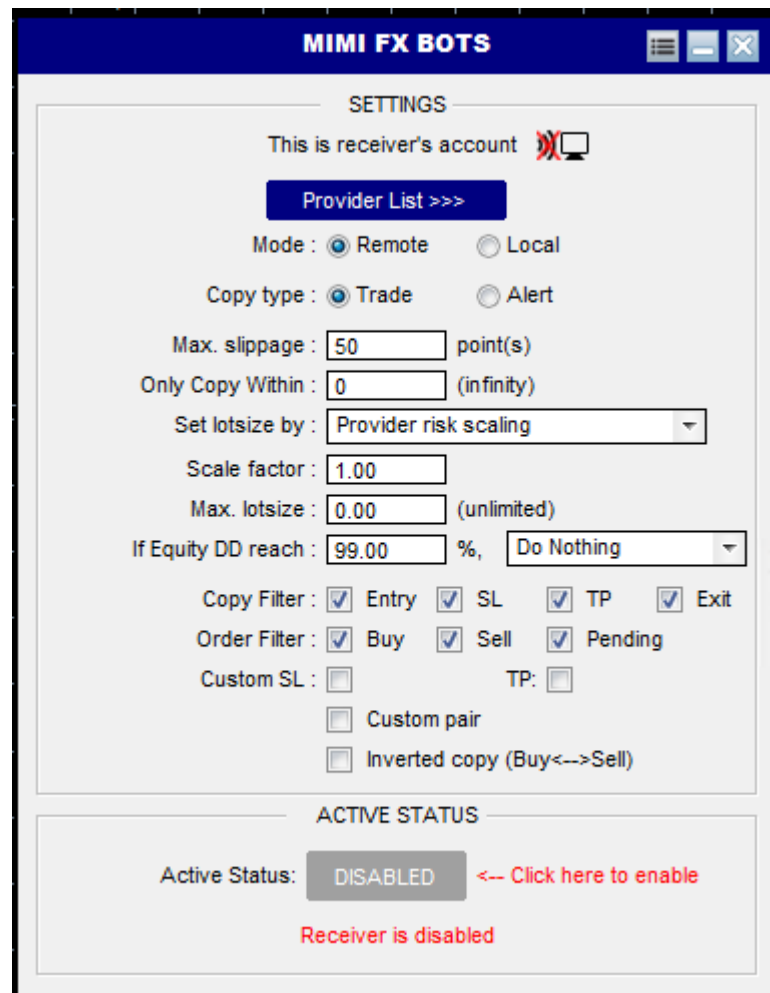


- Go to MT4 or MT5 data folder by main menu -> Files -> Open Data Folder. It will open data folder of your terminal.
- Copy "**MIMI FX BOTS.ex4**" (if you use MT4) or "**MIMI FX BOTS.ex5**" (if you use MT5) file to directory path: `/[data folder]/MQL4(5)/Experts/`.
- Go back to MT4/MT5 terminal -> Main Menu -> View -> Navigator -> Right click on Expert Advisors folder -> Refresh -> Find "**MIMI FX BOTS**" -> Double click or drag it into any chart.
- At startup window -> Common tab -> Enable "**Allow DLL imports**" and "**Allow live trading**" check box.

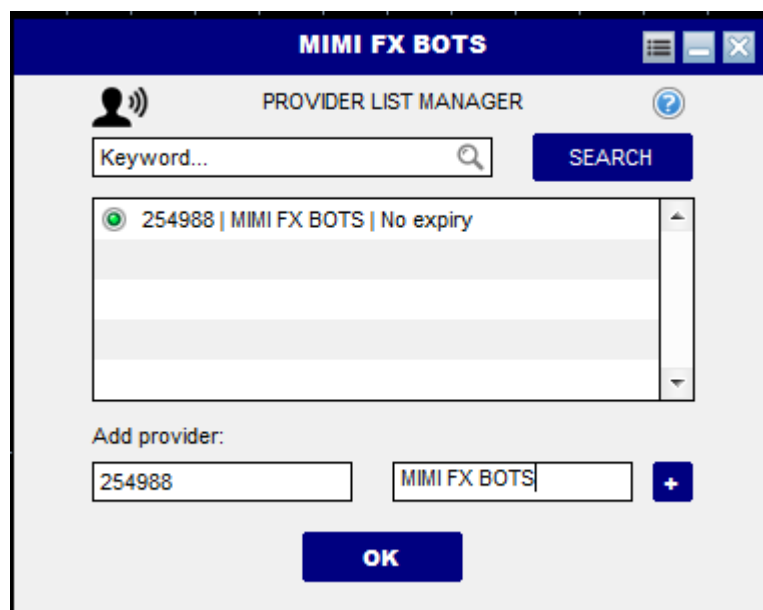


2. Connect to the provider

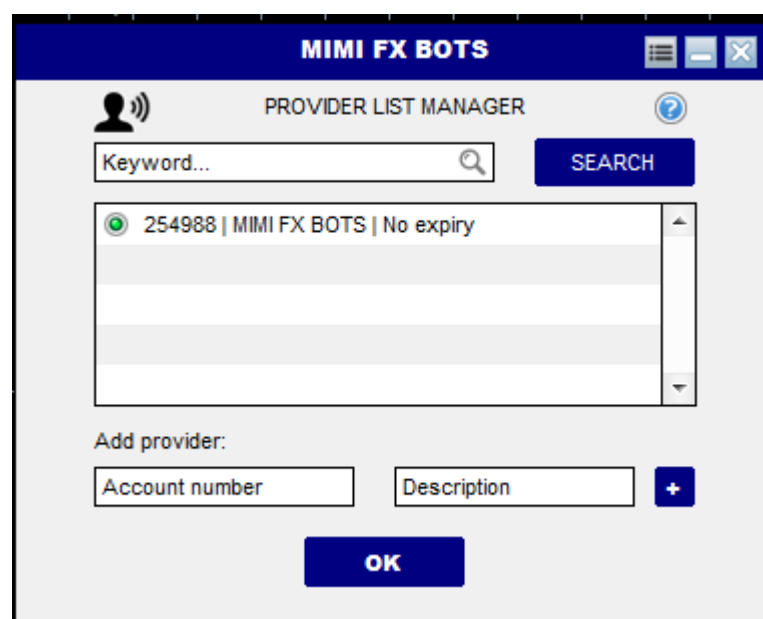
- First, you must ensure that your account number has been added to the list at provider's side and provider has enabled his copier already. You may contact us at copieraccount@makeitmoveitfx.com to confirm.
- After confirming that, you need to add the provider's account number to allowed list on your side. Please note that you can only add the provider if he has added you already on his side.



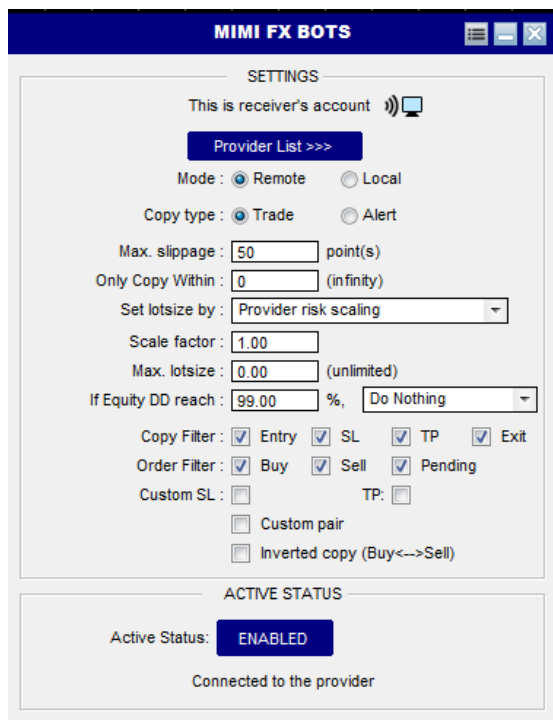
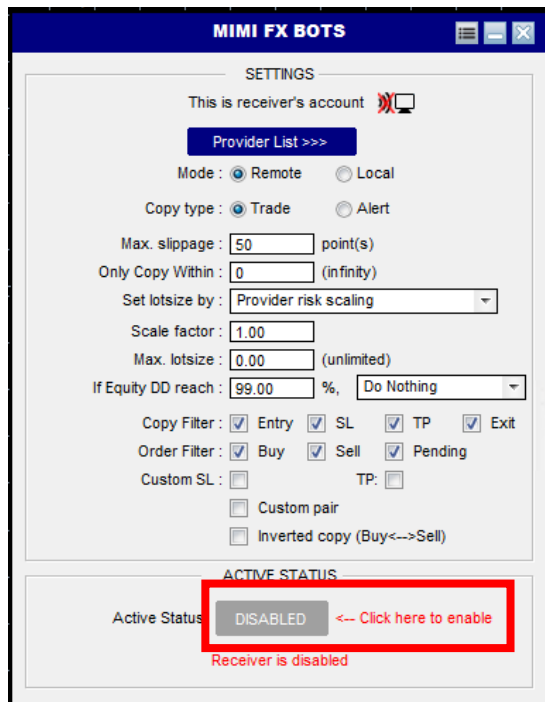
- Click on **Provider List** and the next window will pop up. Enter the Account number that we provided you in the "Account number" box and Enter "MIMI FX BOTS" or any description you want for the "Description".



- Then click “OK”. You would see a green dot next to the account number as you see below if you did everything correctly.



- After adding the provider, now enable the copier at receiver's side by clicking on the "DISABLED" button in the Active Status section at the bottom of the panel. If they are connected, the screen icon at both sides will be blinking.



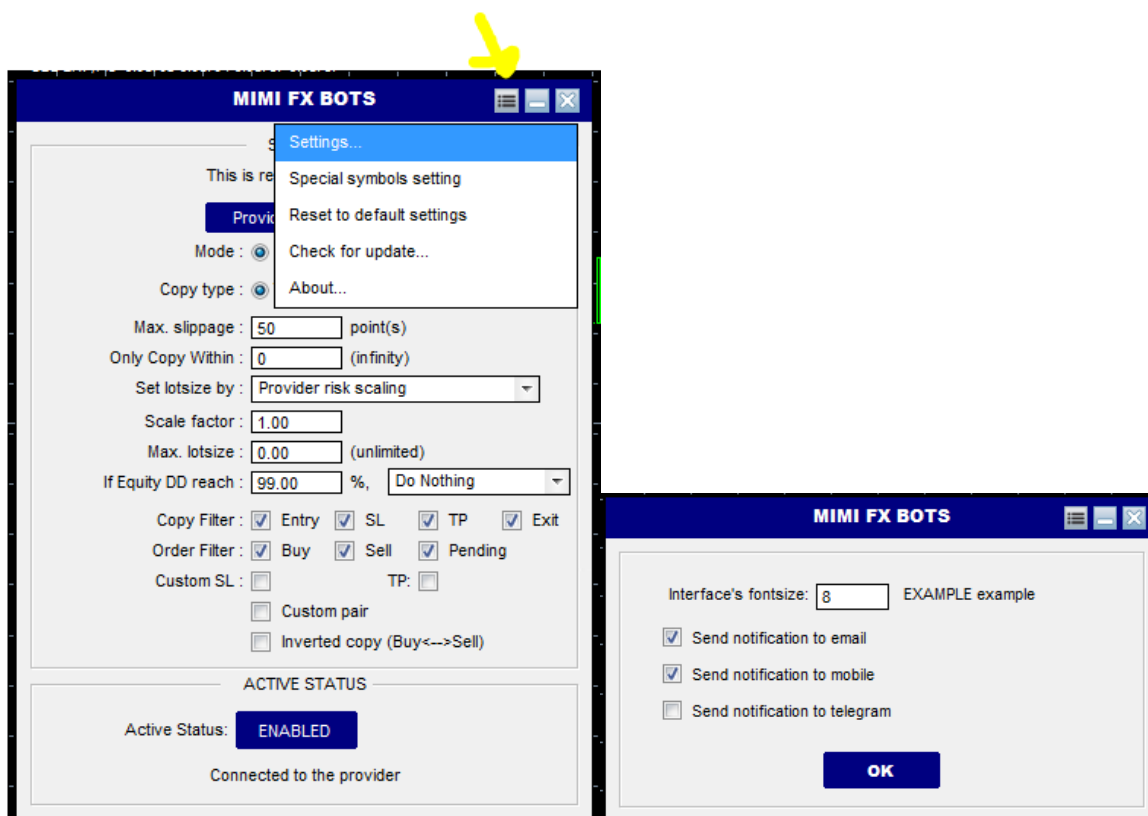
3. Settings and Parameters

- **Provider list:** Manage providers that you accept to copy from. You can add, remove, edit and enable/disable accounts by your own purpose. Your account only receives from accounts that are enabled in this list.
- **Remote/Local mode:** Choose between Remote and Local mode. Remote mode allows to copy between accounts at different locations over internet. Local mode only allows to copy between accounts on the same PC/Server. In the Local mode, trades are copied nearly instant (<0.1 second). In the Remote mode, due to internet connection speed, it may be a bit slower.
- **Transmission data:** Choose how data will be sent/received. It can be either "Trade" (receiver's account trades follow the provider's) or "Signal" (receiver's account only receives signal alert). Provider's choice is priority: If provider choose "Trade", then receiver can receive trade or signal due to his choice; If provider choose "Signal", then receiver can only receive signal despite of his choice.
- **Max. slippage (for receiver only):** Maximum accepted slippage to copy trades. Price might be different between brokers, so if the current price of the receiver's account exceeds max. slippage distance compared to entry price of provider's account, the trade will not be copied. This is useful to prevent unwanted slippage of copied trades, especially during high volatility (news releases). You can even set Max. slippage as 0 or negative to copy equal or better price than provider's entry. For example: If receiver set Max. slippage to 50 points and provider open a Buy at price 1.20000, then receiver will only copy that trade when the current price is equal or lower than 1.20050. If the current price is higher than that, it will wait until the price go back to equal or lower than 1.20050 to copy that trade.
- **Only Copy Within (for receiver only):** The maximum waiting time for receiver to copy a trade since the original trade is opened at provider account. For example: Receiver set "Only Copy Within" to 30 seconds and provider open a trade at the time of 15:00:00 while the receiver is not connected to provider for some reason. Then, if the receiver is connected to provider at the time of 15:00:31, it will not copy that trade anymore.
- **Set lotsize by:** Choose how the trade volume on receiver's account will be set. There are 5 options:
 - **Provider risk scaling:** Receiver's lotsize will be set so that it scale by a scale factor with the provider's risk. This is recommended option because it make receiver's account has the same growth/risk rate as provider's. Example: Provider trades 0.5 lot with balance 1000\$ --> Receiver with balance 2000\$ and scale factor 1 will trade 1.0 lot. Receiver with balance 2000\$ and scale factor 2 will trade 2.0 lot.
 - **Multiplied by provider's lotsize:** Lotsize will be multiply by a factor with Provider's lotsize. Only use this option if you know the lotsize setting manner of the provider, otherwise you may suffer whipsaw by over lotsize. Example: If multiply factor is set as 2 and provider open 1 lot, then receiver will open 2 lot. If multiply factor is set as 1, then receiver will always open the same lot as provider.
 - **Ratio with receiver's balance:** Lotsize will be scaled with receiver's balance. Example: Lotsize is 1 lot if balance is 1000\$, then lotsize will be 1.5 lot when balance is 1500\$.
 - **Fixed lotsize:** Every trade on receiver's account will be set with a fixed lotsize regardless of provider's lotsize or receiver's balance.
 - **Custom risk percentage:** Enter a specify risk percentage for each trade if stoploss occur. Example: A trade with 20pip stoploss is copied, receiver's lotsize will be set so that if stoploss occur receiver will lose 5% of balance. This regime is only applied for trades with predefined stoploss; with no-stoploss trade, it will not be copied until the stoploss is added.

- **Max. lotsize:** Maximum allowed lotsize for each trade. This will prevent your account from open unanticipated over lotsize that may lead to unwanted drawdown.
- **Max Equity DD %:** Maximum equity drawdown percentage allowed. If account equity drawdown reach this level, the copier will take one of the following actions:
 - **Close All Trades:** Close all opening trades and delete all pending orders.
 - **Stop Copy:** Stop copying new trades, but still keep following the opening trades.
 - **Close & Stop Copy:** Close all opening trades and delete all pending orders. Also, stop copying new trades, but still keep following the opening trades.
 - **Close Win Trades:** Close all winning trades.
 - **Close Lose Trades:** Close all losing trades.
- **Copy filter:** Select which exit parameter receiver will copy from provider. With this option, receiver can has its own exit strategy by manual or other EAs without relying on provider.
- **Copy filter (for receiver only):** Select which trade's parameter receiver will be copied from provider:
 - **Entry:** Copy every trades from provider. If you disable this, it will only manage the copied trades, without copying new ones.
 - **SL:** Copy every Stoploss changes from provider.
 - **TP:** Copy every TakeProfit changes from provider
 - **Exit:** Copy exit points from provider. If you disable this, you must exit the copied trades on your own.
- **Order filter:** Select which types of orders will be copied. Some filters are for both provider and receiver, but provider's choice is priority. There are multi-options:
 - **Buy orders:** Buy orders will be copied.
 - **Sell orders:** Sell orders will be copied.
 - **Pending orders:** Pending orders will be copied.
 - **Custom pair:** Only copy trade of custom pair (combine with order types above). You can input multiple pairs by putting comma (,) or semicolon (;) between them. E.g: EURUSD; GBPUSD; USDJPY. You can also exclude the pairs by putting exclamation (!) in front of the pairs. E.g: !EURUSD; !GBPUSD; !USDJPY.
 - **Inverted copy:** All filtered trades will be inverted when come to/from receiver/provider: Buy<-->Sell, BuyLimit<-->SellStop, BuyStop<-->SellLimit, Stoploss<-->Takeprofit.
- **Custom SL and TP:** Set a custom StopLoss and TakeProfit for copied orders that override the original orders from provider.

4. Other configurations

You can change some more configurations by clicking on menu icon on the header



- **Settings:** Configure settings, such as font size, send notification to email, mobile and telegram.
- **Special symbols setting:** Config up to 5 special pair symbols synchronization. Currency symbols will be auto recognized, but some special symbol pairs are different between brokers and may need to be setup manually, such as: US500 → USA500, DE30 → GER30, etc.
- **Reset to default settings:** Reset all the settings back to manufactured settings.
- **Check for update:** Check the latest version and update if it is available.